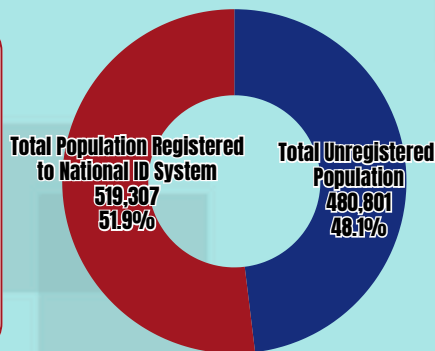
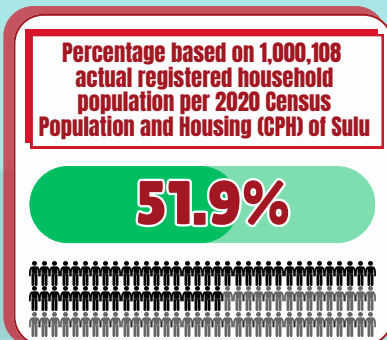
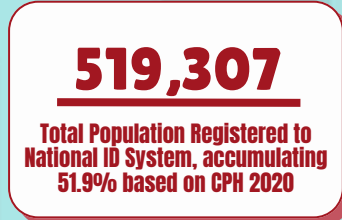


Reference No: 66IG-2025-04

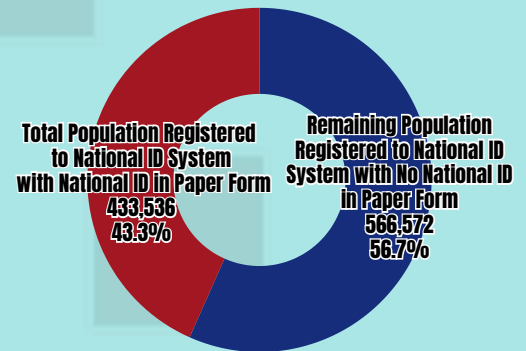
Date: April 15, 2025

NATIONAL ID SYSTEM MARCH 2025 UPDATES

Step 2 Registration Status



Issued National ID in Paper Form Status



Month of February

Cumulative Total

Municipality

Step 2
Registration

Issued
National
ID in Paper
Form

Step 2
Registration

Percentage
Based on the
CPH 2020

Issued
National
ID in Paper
Form

Municipality	Step 2 Registration	Issued National ID in Paper Form	Step 2 Registration	Percentage Based on the CPH 2020	Issued National ID in Paper Form
JOLO	2,003	1,567	101,617	74.0%	90,530
SIASI	212	161	59,754	73.2%	24,351
PATIKUL	72	60	47,024	59.1%	43,389
TALIPAO	24	78	37,259	37.2%	24,105
INDANAN	277	189	37,336	40.0%	34,573
PARANG	-	-	32,924	46.0%	25,172
MAIMBUNG	38	-	29,609	49.7%	23,729
OLD PANAMAO	-	-	23,079	46.3%	*25,845
PANGUTARAN	241	42	22,060	60.6%	21,462
TONGKIL	-	-	19,707	55.3%	18,081
OMAR	-	-	19,180	68.3%	*22,682
LUUK	-	-	18,999	50.2%	*20,276
KALINGALANG CALUANG	-	-	15,496	39.2%	14,950
PANDAMI	-	-	13,687	41.2%	11,076
LUGUS	-	-	12,013	41.4%	9,362
PANGLIMA ESTINO	-	-	8,500	24.8%	5,620
PATA	-	-	8,376	33.9%	7,732
TAPUL	-	-	7,349	35.3%	6,090
HADJI PANGLIMA TAHIL	-	-	5,338	67.5%	4,511

National ID Registration Center

- PSA - Sulu, Fixed Registration Center, 2/F NDCC, Walled City, Jolo, Sulu

Mobile Registration
on Institutional, School
to school and Barangay Level.

NOTICE

- Children 0–4 years old can now be registered to have National ID with the assistance of parent/guardian;
- For correction of Clerical Errors or Updating of Demographic Information kindly visit PSA – Sulu PhilSys Fixed Registration Center, 2/F NDCC, Walled City, Jolo, Sulu
- You may now download your **DIGITAL NATIONAL ID** at <https://national-id.gov.ph> or via eGovPH application

* Double Issuance of National ID in Paper Form per Mode 1 (Registration Center Application) and Mode 2 (Print and Deliver Process).

#NationalIDPH