



LANAO DEL SUR INFLATION RATES IN MARCH 2025

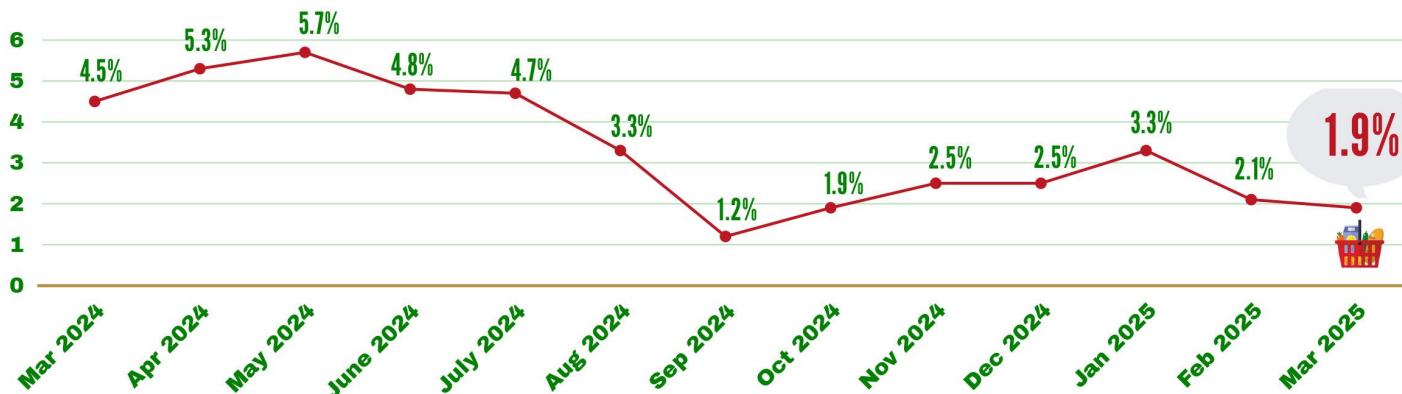


Date of Release: 08 April 2025

Reference No: BARM-LDS-2025-034

Headline Inflation Rates

Year-on-Year, March 2024 - March 2025, in percent



Inflation Rates by Commodity Groups

Percentage from March 2024 - March 2025

FOOD AND NON-ALCOHOLIC BEVERAGES



2.1%

from 2.0% (percentage change from February 2024 to February 2025)



FURNISHING, HOUSEHOLD EQUIPMENT, ROUTINE AND MAINTENANCE OF THE HOUSE



2.6%

from 2.6% (percentage change from February 2024 to February 2025)



RECREATION, SPORTS AND CULTURE



2.0%

from 2.2% (percentage change from February 2024 to February 2025)



PERSONAL CARE, MISCELLANEOUS GOODS AND SERVICES



2.2%

from 2.5% (percentage change from February 2024 to February 2025)



ALCOHOLIC BEVERAGES AND TOBACCO



1.0%

from 1.6% (percentage change from February 2024 to February 2025)



HEALTH



2.3%

from 2.4% (percentage change from February 2024 to February 2025)



EDUCATION SERVICES



8.7%

from 8.7% (percentage change from February 2024 to February 2025)



Technical Notes

Consumer Price Index

is an indicator of the change in the average retail prices of a fixed basket of goods and services commonly purchased by households relative to a base year.

Inflation Rate

is the rate of change of the CPI expressed in percent. Inflation is interpreted in terms of declining purchasing power of money.

Headline Inflation

refers to the rate of change in the CPI, a measure of the average of a standard "basket" of goods and services consumed by a typical family.

Year-on-Year Inflation

refers to the comparison of change of one month to the same month of the previous year.

Source: Survey of Retail Prices of Commodities for the generation of CPI, Philippine Statistics Authority

CLOTHING AND FOOTWEAR



1.5%

from 1.9% (percentage change from February 2024 to February 2025)



TRANSPORT



-1.4%

from -1.0% (percentage change from February 2024 to February 2025)



RESTAURANT AND ACCOMODATION SERVICES



1.2%

from 1.7% (percentage change from February 2024 to February 2025)



HOUSING, WATER, ELECTRICITY, GAS, AND OTHER FUELS



2.2%

from 3.4% (percentage change from February 2024 to February 2025)



INFORMATION AND COMMUNICATION



0.4%

from 0.9% (percentage change from February 2024 to February 2025)



FINANCIAL SERVICES



0.0%

from 0.0% (percentage change from February 2024 to February 2025)



Rima Saber Taurac Bldg. 3
Amal Pakpak Avenue, Datu Saber
Marawi City, Lanao del Sur



rssobarm@psa.gov.ph



lanaodelsur@psa.gov.ph



Philippines Statistics
Authority-Lanao del Sur